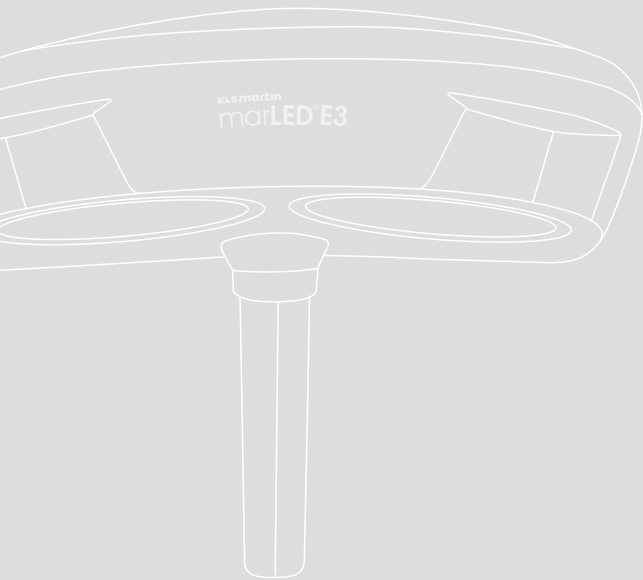


Examination Lights



marLED® E3

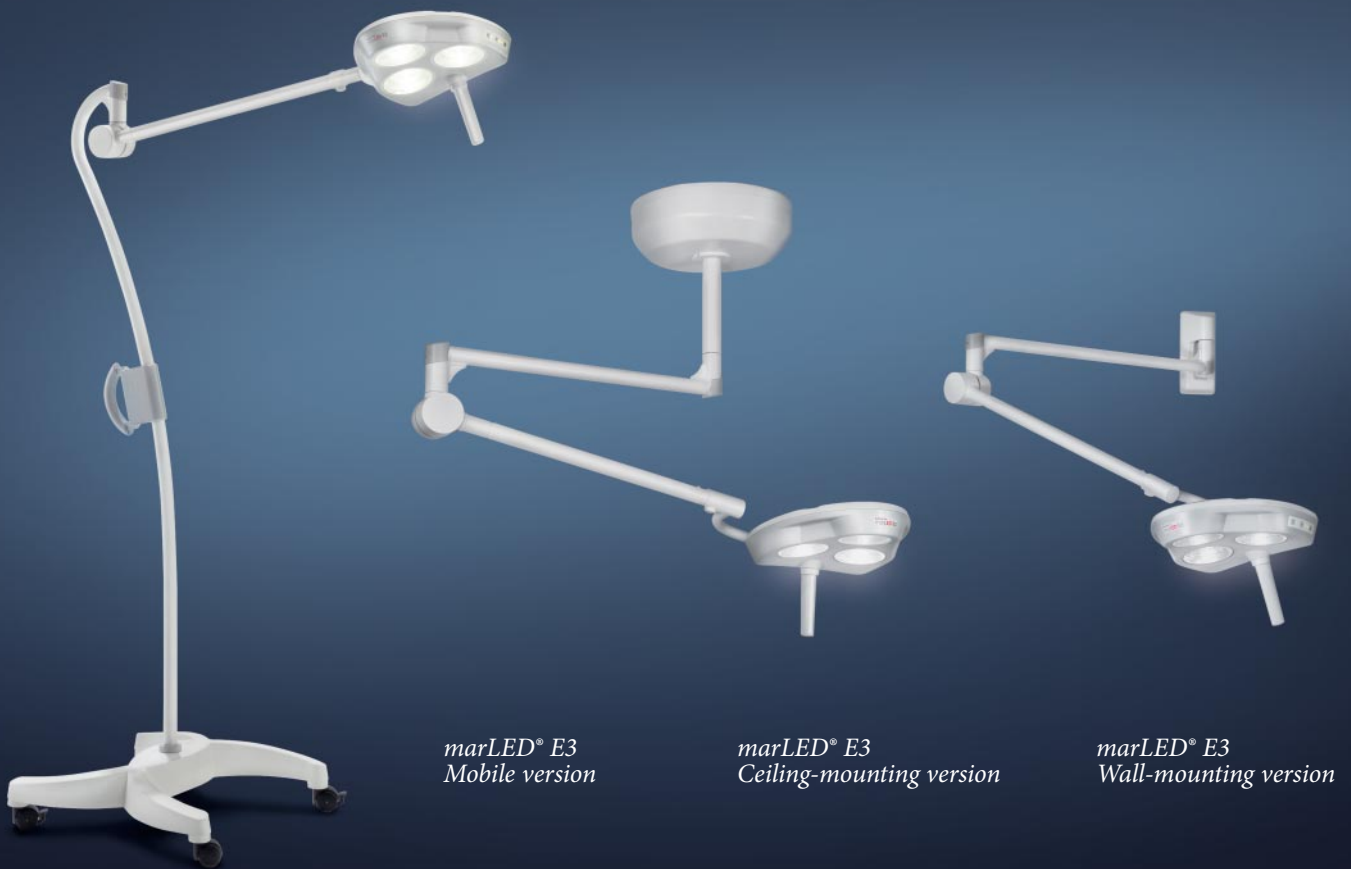
Latest-generation examination light



marLED® E3

Light made to measure

The new marLED® E3 from KLS Martin satisfies the highest quality standards. Boasting a completely new design, the light offers excellent ergonomic handling and optimized performance in terms of hygiene.



*marLED® E3
Mobile version*

*marLED® E3
Ceiling-mounting version*

*marLED® E3
Wall-mounting version*

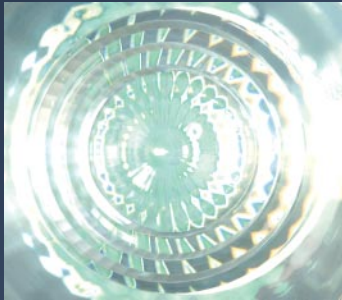
What's more, the use of the latest LED lighting technology lets you always keep a cool head. Heat radiation – a typical side-effect of halogen lights – is no longer a problem.

Additional advantages include excellent color rendition, a color temperature similar to daylight, and very low operating costs due to the extremely long life of the latest-generation LEDs. And since the marLED® E3 incorporates no wearing parts, maintenance and servicing costs are completely eliminated. For technical details, please refer to the table on the right.

Technical data at a glance

	marLED® E3
Power requirements thanks to integrated universal PSU*	100-240 V
Color temperature	4,500 K
Illuminance at a distance of 1.0 m	60,000 Lux
Light field diameter	150 mm
Color rendering index (CRI) R _a (1-8)	95
Working range	70-140 cm
Rated wattage	3 x 5 W
Average LED life	> 40,000 h

* integrated universal power supply suitable for all countries 100-240 V



New, innovative lens system

- Offers the lighting technologies of an operating light
 - Homogeneous light field thanks to microstructure technology
 - Excellent deep cavity illumination
 - Maximum shadow dilution
 - Excellent contrast viewing
- Maximum efficiency – i.e., maximum illuminance, but with minimum power requirements



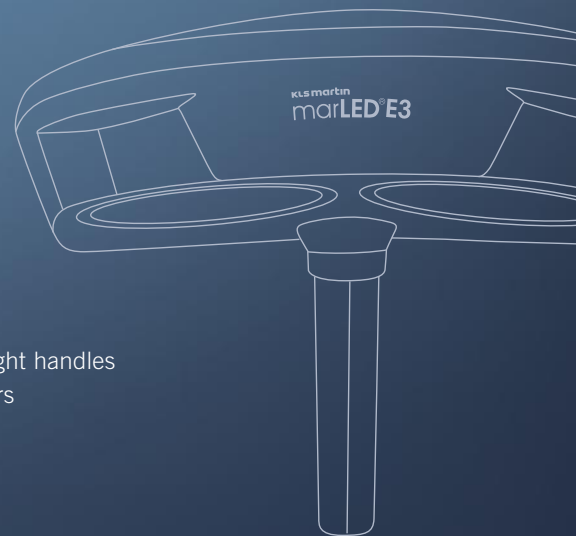
Hygiene and operation

- The new, hygiene-optimized design satisfies the highest quality standards
- Closed housing with smooth contours – optimal for fast and efficient cleaning
- Patented joining technology eliminates hygienically problematic areas on the housing (no screws, no undercuts)
- Flush-integrated front glasses in 2K technology and flush-integrated membrane keypad for easy, hassle-free cleaning and wiping disinfection
- Seamlessly integrated control panel
 - ON/OFF and dimming
 - LED indicators



Handle options

- Handle support for sterilizable operating light handles
- Handle support for disposable sterile covers



Ideal for use

- | | |
|---|--|
| <ul style="list-style-type: none"> ■ Hospitals <ul style="list-style-type: none"> - Outpatient departments - Induction and postanesthesia care - Examination rooms | <ul style="list-style-type: none"> ■ OMF <ul style="list-style-type: none"> ■ Medical practices ■ Dental and oral surgery ■ Veterinary medicine |
|---|--|

KLS Martin Group

Karl Leibinger GmbH & Co. KG
78570 Mühlheim · Germany
Tel. +49 7463 838-0
info@klsmartin.com

KLS Martin GmbH + Co. KG
79224 Umkirch · Germany
Tel. +49 7665 9802-0
info@klsmartin.com

Stuckenbrock Medizintechnik GmbH
78532 Tuttlingen · Germany
Tel. +49 7461 165880
verwaltung@stuckenbrock.de

Rudolf Buck GmbH
78570 Mühlheim · Germany
Tel. +49 7463 99516-30
info@klsmartin.com

KLS Martin France SARL
68000 Colmar · France
Tel. +33 3 8921 6601
france@klsmartin.com

Martin Italia S.r.l.
20871 Vimercate (MB) · Italy
Tel. +39 039 605 6731
italia@klsmartin.com

Martin Nederland/Marned B.V.
1270 AG Huizen · The Netherlands
Tel. +31 35 523 4538
nederland@klsmartin.com

KLS Martin UK Ltd.
Reading RG1 3EU · United Kingdom
Tel. +44 (0) 1189 000 570
uk@klsmartin.com

Nippon Martin K.K.
Osaka 541-0046 · Japan
Tel. +81 6 6228 9075
nippon@klsmartin.com

KLS Martin L.P.
Jacksonville, FL 32246 · USA
Tel. +1 904 641 7746
usa@klsmartin.com

Gebrüder Martin GmbH & Co. KG
Representative Office
121471 Moscow · Russia
Tel. +7 499 792-76-19
russia@klsmartin.com

Gebrüder Martin GmbH & Co. KG
Representative Office
201203 Shanghai · China
Tel. +86 21 2898 6611
china@klsmartin.com

Gebrüder Martin GmbH & Co. KG
Representative Office
Dubai · United Arab Emirates
Tel. +971 4 454 16 55
middleeast@klsmartin.com

Gebrüder Martin GmbH & Co. KG
A company of the KLS Martin Group
Ludwigstaler Str. 132 · 78532 Tuttlingen · Germany
Postfach 60 · 78501 Tuttlingen · Germany
Tel. +49 7461 706-0 · Fax +49 7461 706-193
info@klsmartin.com · www.klsmartin.com

